

AD22 Indicator Lamp Series



www.xindali.com

Brief Introduction

<<<

AD22(LED) series of indicator is equally used LED shining chip as light source. Because of long life, low consumption, small volume and light weight, it is a product replaced the older kind of incandescent lamp and indicator of neon lamp by new ones. AD22 indicators are produced by our factory enjoying following characters: high brightness, good reliability, beautiful shape and careful manufactured. Products are well praised by lots of clients. In order to fit in with top quality and aesthetic demand of user, we develop AD22-22B, C, D, E, G, H, double-color lamp, position indicator, shining buzzer and mini short indicator, as well as design shape of AD22-22G/22GS series button and it is possible to meet all kinds of international standard Lampshade, which is made of polycarbonate with high intension and enjoying better anti-surge performance, and bolt-type connector designed will make it safer and more convenient. All improvement will be provided to make your choice more convenient and your design perfect.

Use

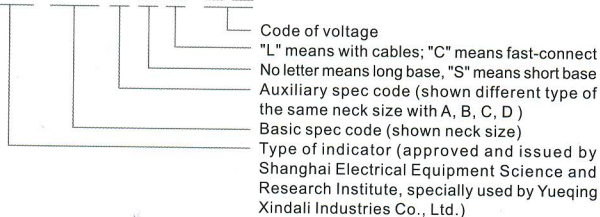
<<<

AD22 series of indicators are used as indicating, foretelling, accident and other signals in the lines of equipment (such as electrical power, telecommunication, machine tool, watercraft, textile, printing and mine machinery, etc).

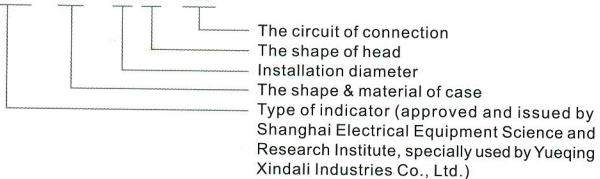
Type and meaning

<<<

AD22-□□□□□□/□□



AD22 □ - □ □ □



Applicable environment

<<<

- (1) Surrounding temperature: $-25^{\circ}\text{C} \sim +55^{\circ}\text{C}$.
- (2) Relative humidity: $\leq 98\%$.
- (3) It can normally work under the conditions of 2-80Hz vibration frequency and 0.7g/h accelerated speed.
- (4) Pollution grade: III; Installed sort: III.
- (5) It is possible to work under the moist tropical environment if there is a "TH" sign.

Main technical target

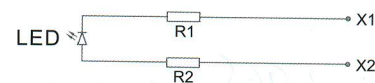
<<<

- (1) Voltage of working frequency: 2.5kV (AC valid value), 1min.
- (2) Insulated resistance $\geq 2\text{M}\Omega$
- (3) Voltage wave allowed by AC indicator $\pm 20\%$
- (4) Continual working life $\geq 30000\text{h}$
- (5) Brightness $\geq 60\text{cd/m}^2$
- (6) Index of leakage CT1 ≥ 100
- (7) Protection grade is IP40, and it is possible to be made to up to IP67
- (8) Using frequency: AC50 ~ 60 Hz

Circuit Introduction

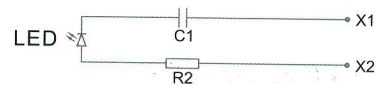
<<<

- (1) AC and DC indicator (AC/DC6V ~ 220V)

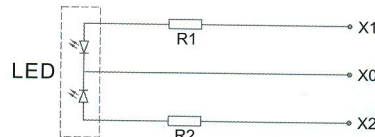


Note: It should be considered radiating condition When DC is up to 110V, 220V and 380V, for there is a great of heat.

- (2) AC indicator (AC 220V, AC380V)



- (3) Return of double-color indicator (DC, AC110 ~ 220V)



Note: When put through X0 and X1, lamp is shining green, when done X0 and X2, lamp is shining red.

Contrast list of voltage, current

<<<

Supply Voltage	AC.DC								DC	FD		AC	
Voltage	6V	12V	24V	36V	48V	110V	127V	220V	380V	500V	220V	380V	
Current	140	72	18~72	18	18	16	16	12	12	12	16	17	

Note: "FD" in the list means a discharging lamp can be installed on the cupboard of capacitor. PG denotes pure green, PB denotes pure blue, PW denotes pure white